



ENABLE.EU

Enabling the Energy Union

What is ENABLE.EU?

LCS-Rnet 11th Annual meeting

Plenary 4: Energy- Climate link

Rome, 18 October 2019

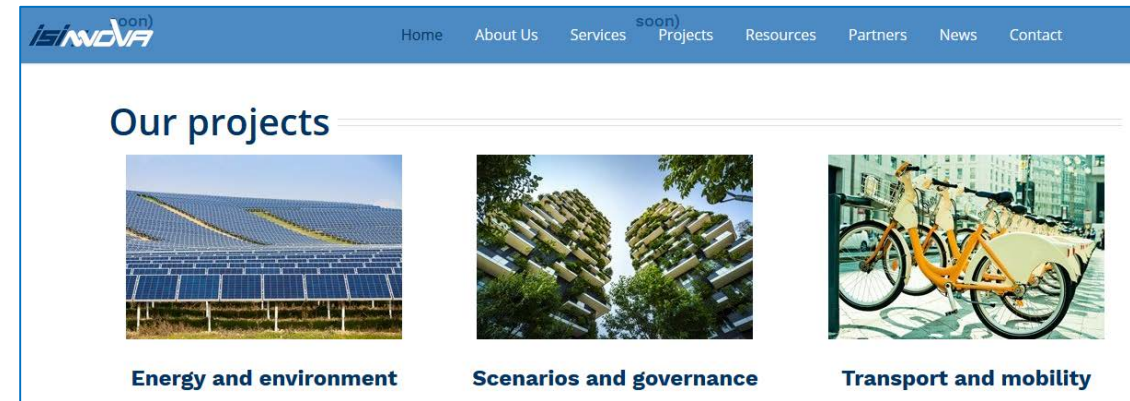
Stefano Proietti, ISINNOVA



This project has received funding from the European Union's Horizon 2020 research and innovation programme under grant agreement number 727524.

Who we are

- Research and consultant Institute founded in 1971
- Consolidated experience in **energy efficiency, sustainable mobility, territorial systems, environmental sustainability**
- 15 members staff with **multidisciplinary background** in engineering, statistics, economics, politics and informatics
- Long story of collaboration at **national** (Ministries, Regions, Provinces and Municipalities) and **international** level (European Commission, World Bank, European Bank of Investments, foreigner Ministries, Regions and Municipalities)
- Specialised skills in **coordination** of projects, **analysis** of and support to policies, **impact assessment, evaluation** of policies and technologies energy efficiency, **monitoring** of participation processes to policies.





- **ENABLE.EU:** Enabling the Energy Union through understanding the drivers of individual and collective energy choices in Europe
- **Duration:** November 1, 2016 to October 31, 2019 (36 months)
- **Budget:** € 3,337,416.25 (EU funding)
- **Consortium:** 12 partners in 11 countries
- **Website:** <http://www.enable-eu.com>

The project in brief

- The Energy Union Framework Strategy aims at fostering a **cost-efficient energy transition** able to deliver **secure, sustainable and affordable energy** to all European consumers.
- It is aimed at a **citizen-oriented energy transition** based on a **low-carbon transformation** of the energy system.
- The successful implementation of the Energy Union will materialize in a **change in energy production and energy consumption choices**.
- These choices are shaped by **economic prerequisites, value systems, gender-based preferences, efficiency of governance** and the maturity of civil society.



Changing energy behaviour by empowering consumers

Aims of the project

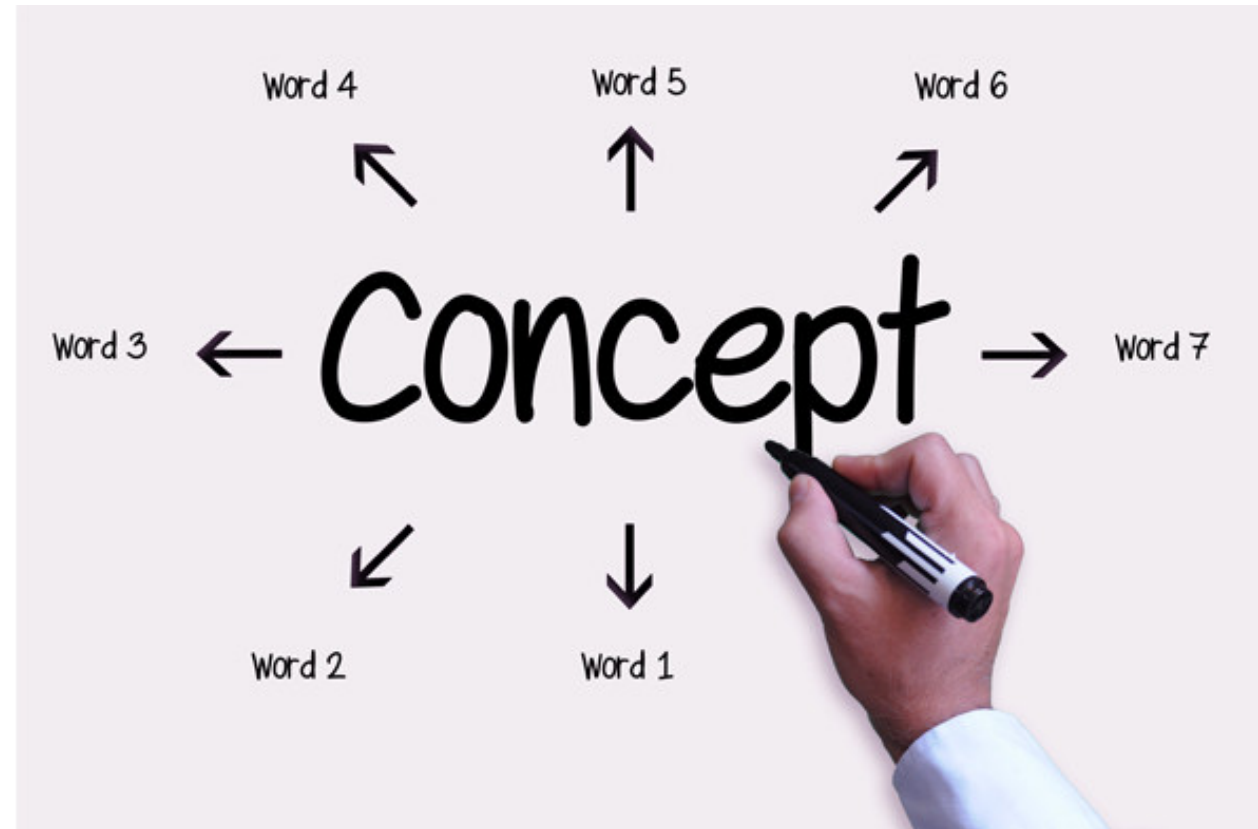
Understanding the drivers of energy choices in three areas: transport, heating and cooling, and prosuming

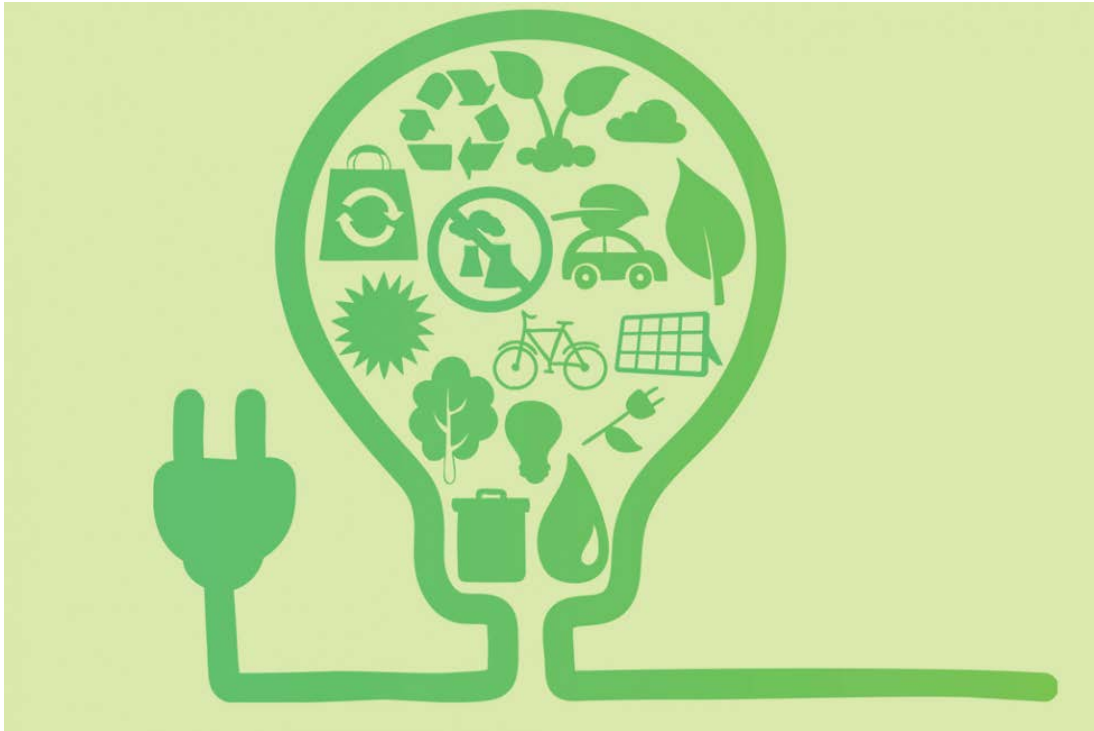


- To identify the key factors of energy choices in three areas: transport, heating and cooling, and prosuming.
- To better grasp the interactions between individual and collective energy choices and the regulatory, technological and investment prerequisites of the Energy Union transition pillar.
- To look at the social acceptability of energy transitions using a participatory foresight and assessment process engaging key stakeholders and selected households.
- To increase the knowledge of governance and social mobilisation practices that encourage collective energy choices in line with the Energy Union objectives
- To provide strategic policy recommendations

Concept and approach

- To detect the **key socio-economic drivers** of individual and collective energy choices by analysing the **interrelation** between various factors, such as **social norms, belief systems, everyday practices** and economic aspects.
- **Cross-country comparison** in 11 countries, to understand the factors that drive or impede **everyday routines and practices**.
- To increase social acceptance by making citizens **active participants** in consumption and production of energy.





*Recommendations and scenarios
designed to achieve the Energy
Union's long-term targets*

- Literature review of existing theories and studies
- Investigation of technological, economic and social factors affecting individual energy choices and behaviours, as well as social mobilisation and governance factors that influence the social acceptability of energy transition.
- Participatory foresight exercises, focusing on how to change energy choices and behaviours to support the full-scale transition to a low carbon economy.
- Reference and policy scenarios on transition using quantitative modelling and the results will be compared with the current long-term energy targets of the European Commission.
- Series of policy recommendations formulated and disseminated to policy makers.

- Comprehensive **literature review** setting the scene for the entire study
- **Economic factors** impacting individual long-term energy choices and company/collective energy choices
- **Social and cultural factors** impacting energy choices and behavior as based on **case studies**
- Nine national case studies on **governance barriers** to the energy transition
- **Transition workshops** (3 ones, with more than 160 experts and citizens)
- Elaboration of **scenarios** for the Energy Union
- Formulation of **policy proposals**



Lesson learnt

- **Governance challenges** for all 11 countries covered (planning, support, resources, technologies)
- **Economic factors** as key:
 - ✓ **Not strict correlation** between energy prices and energy savings;
 - ✓ **Limited impact** of information provision tools, despite importance of **immediate billing** and of **smart meters**;
 - ✓ **Primary importance** of long-term investments in energy-efficient durable goods and refurbishment.
- Importance of **social conventions** in determining energy choices;
- Environmental driver as **not a decisive factor** (compared to technological interest and knowledge);
- Effectiveness of **behavioural interventions** (e.g., trial periods);
- Only households behavioural change is **not enough** to meet EU targets;
- **Holistic approach** with a combination of actions and tools, also to avoid collateral effects.





ENABLE.EU video

<https://www.youtube.com/watch?v=YEiRpUu>

[WbFI](#)

For more information about
ENABLE.EU
sproietti@isinnova.org

